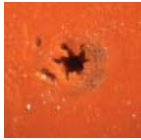


Septa

Premium Septa

Septum Without CenterGuide



Septum With CenterGuide



CenterGuide can help reduce coring when used with tapered (rounded-tip) needles.

Premium Septa are preconditioned and packed in glass jars. Premium septa generally have much lower bleed than general purpose septa.

CenterGuide™ Septa for Improved Performance

- Center point guides the needle for easy penetration
- Reduce needle bending
- Precision molding assures accurate fit
- Available in selected sizes of our premium septa

Precision-molded septa have a recess on the injection side, to guide the syringe needle to the same point with every injection. The CenterGuide design requires less force for initial penetration, for a smoother feel. Septum life may be enhanced in some applications by minimizing tearing and coring.

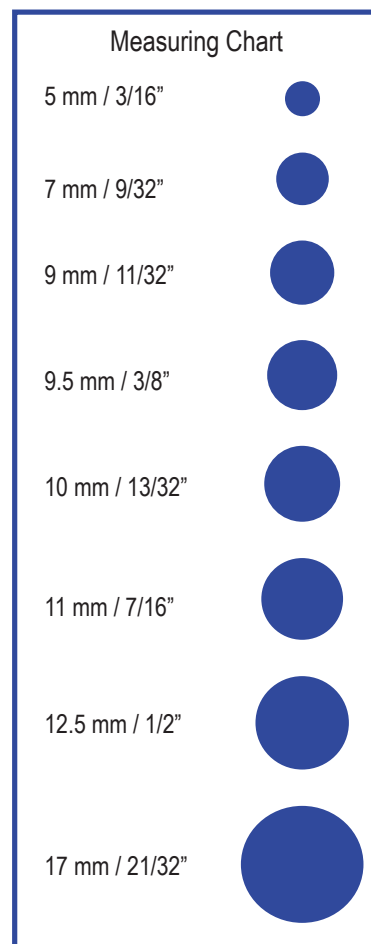
Septum	High Temperature	Pre-pierced	Low Bleed	Suggested Applications
Marathon™	✓	✓	•	Autosampler use; pre-pierced greater reliability, trace analysis
BTO®	✓	•	✓	High injection port temperature, lowest bleed, trace analysis
Advanced Green 3™	✓	•	•	General purpose use; low sticking

Upper Temperature Limit: Septa BTO, Marathon and Advanced Green 3 can be used at 400°C and injector set point temperatures in most instruments. Slight sticking may occur in new injection ports when holding septa above 300°C over many days.



Septa Cross Reference

Instrument	Septum Size
Agilent/HP	
5880A, 5890, 6850, 6890, 7890, 7890A, & 7820A	11 mm
5700 series, 5830/40	9.5 mm
On-column injection	5 mm
Purged packed column	11 mm
Fisons/Carlo Erba	
8000 Series	17 mm
PerkinElmer	
Sigma Series, 8000 Series, Clarus	11 mm
AutoSystem/AutoSystem XL	11 mm
Shimadzu	
9A, 14, 15A, 16, 17A, 2010 & 2014	Plug
Thermo Instruments	
Trace, Focus Split/Splitless, 8000 Series	17 mm
9001, GCQ	9 mm
PTV Injector	12.7 mm
Varian	
1177 Injector	9 mm
1040/41/60/61	9.5 mm
1075/77/78, 1079, 1093/94 SPI	11.5 mm



Septa



BTO 11mm Septa

Septa BTO®

- Extended temperature range, low-bleed
- Maximum temperature 400°C*
- Virtually eliminates injection-port sticking
- Pre-conditioned; packaged in glass to prevent contamination
- Each batch GC-FID tested
- Ideal for use with low-bleed, "Mass Spec" capillary columns

Septa BTO is Bleed and Temperature Optimized for today's most demanding GC and GC/MS applications. Septa BTO is formulated to extend low-bleed and outstanding mechanical properties of premium GC septa to the highest-temperature applications. It retains remarkable softness and pierceability at high temperatures, with extremely low bleed. Septa are 3 mm thick, except Shimadzu-style plug septa, and are packaged in glass vials.

Description	Qty	Item No.
5 mm BTO CenterGuide™	50/pk	298787
1/4" (6.4 mm) BTO	50/pk	298755
9 mm BTO CenterGuide	50/pk	298713
3/8" (9.5 mm) BTO	50/pk	298705
10 mm BTO	50/pk	298745
7/16" (11 mm) BTO CenterGuide	50/pk	298717
7/16" (11 mm) BTO CenterGuide	100/pk	298718
11.5 mm BTO CenterGuide	50/pk	298777
1/2" (12.7 mm) BTO CenterGuide	50/pk	298727
17 mm BTO CenterGuide*	50/pk	298817
BTO for Shimadzu	50/pk	298735

* For 17mm injectors the maximum is 300°C



Advanced Green 3™

- True low-bleed, high temperature green septum
- Maximum temperature 400°C

The CRS Advanced Green 3 Septum was specifically created to combine significantly longer injection life, low bleed and low injection port adhesion. The result is a green septum you can use for all your critical analyses. Advanced Green 3 Septa are packaged in glass vials for high purity. Septa are 3 mm thick, except Shimadzu-style plug septa.



AG3 11mm Septa

Description	Qty	Item No.
5 mm AG3 CenterGuide	50/pk	246525
9 mm AG3 CenterGuide	50/pk	246713
3/8" (9.5 mm) AG3	50/pk	246124
7/16" (11 mm) AG3 CenterGuide	50/pk	246225
7/16" (11 mm) AG3 CenterGuide	100/pk	246228
11.5 mm AG3 CenterGuide	50/pk	246725
1/2" (12.7 mm) AG3 CenterGuide	50/pk	246325
17 mm AG3 CenterGuide	50/pk	246624
AG3 for Shimadzu	50/pk	246424

Marathon™ Septa

- Excellent Performance with Long Injection Life
- Pre-pierced for greater reliability
- Premium septum for autosamplers
- CenterGuide™ Marathon are pre-pierced for extremely reliable performance
- Maximum temperature setting 400°C

The CenterGuide versions of Marathon are pre-pierced to channel the needle through the same spot with each injection, which helps eliminate the common type of coring that occurs on the first injection. The Marathon septum is also ideal for standard manual-injection GC and GC/MS. Septa are 3 mm thick, except Shimadzu-style plug septa. Septa are packaged in glass jars.



Marathon 11mm Septa

Description	25/pk	50/pk	100/pk
5 mm Marathon CenterGuide	239587	239597	
9 mm Marathon CenterGuide	239778	239779	
7/16" (11 mm) Marathon CenterGuide	239287	239297	239888
11.5 mm Marathon CenterGuide	239787	239798	
1/2" (12.7 mm) Marathon CenterGuide	239387	239397	
17 mm Marathon	239688	239698	
Shimadzu	239488	239498	

General-Purpose Septa

Puresep T™



Puresep T

- The better PTFE coated septum
- Recommended maximum temperature is 225°C

Silicone-based septum is faced on one side with a double layer of polyimide and PTFE. The polyimide adheres to both the silicone and PTFE, providing a better bond and enhanced durability. The outer PTFE coating assures maximum inertness and helps minimize bleed.

Description	Qty	Item No.
1/4" (6.0 mm) Puresep T	50/pk	230665
3/8" (9.5 mm) Puresep T	50/pk	230675
7/16" (11 mm) Puresep T	50/pk	230685
11.5 mm Puresep T	50/pk	230697
1/2" (12.7 mm) Puresep T	50/pk	230695
13 mm Puresep T	50/pk	230698

Puresep P™



Puresep P

- Made from silicone rubber coated with a layer of high-temperature polyimide
- 3 mm thick

The polyimide layer is stable to 400°C, however the recommended upper limit for the septum as a whole is 300°C, due to the characteristics of silicone.

Description	Qty	Item No.
1/4" (6.0 mm) Puresep P	50/pk	230630
3/8" (9.5 mm) Puresep P	50/pk	230640
7/16" (11 mm) Puresep P	50/pk	230650
11.5 mm Puresep P	50/pk	230670
1/2" (12.7 mm) Puresep P	50/pk	230660
13 mm Puresep P	50/pk	230680



Economy Blue Septa

Our Blue Septa are designed for non-demanding, routine applications. They are easy to penetrate, with a durometer rating of 40 - 45. The septa can be used up to 250°C and are suitable for 90% of all GC analyses. Made from silicone.

Description	Qty	Item No.
1/4" (6.4 mm) Economy Blue Septa	100/pk	234625
3/8" (9.5 mm) Economy Blue Septa	100/pk	234905
7/16" (11 mm) Economy Blue Septa	100/pk	234115
1/2" (12.7 mm) Economy Blue Septa	100/pk	234125



Economy Blue Septa

Accessories

Injection Port Cleaning Kit

This is designed for cleaning all GC injection ports, including those in Shimadzu instruments. Included are three stainless steel brushes, 5 mm (for Shimadzu), 1/4" and 3/8", and one scraper for removing septum residue.

Description	Item No.
Injection Port Cleaning Kit	206211



206211

Septa Pick

The Septa Pick is useful for removing small pieces of septa lodged in the threads and corners of the septum cap or injection port. It can also be used to remove small bits of graphite ferrule from the cap and fittings of column connectors; other small cleaning jobs.

Description	Item No.
Septa Pick	205465



205465